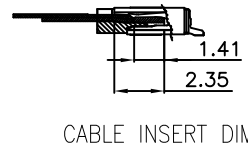
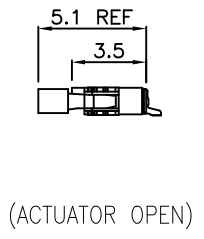
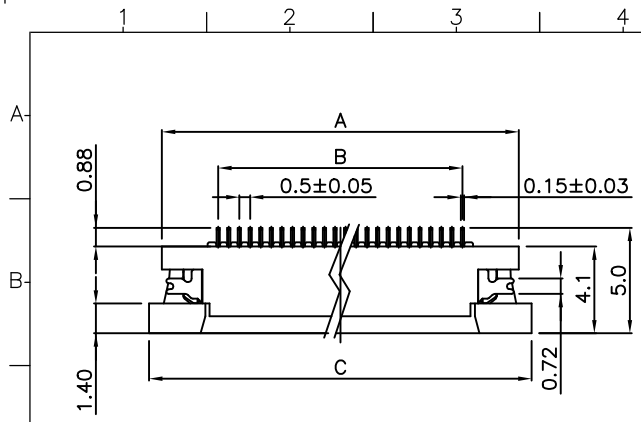


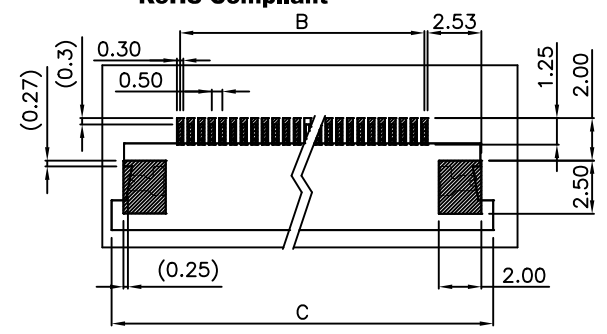
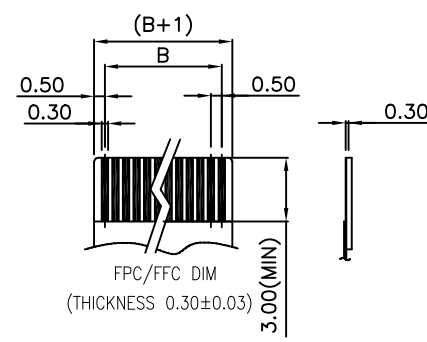
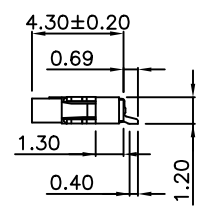
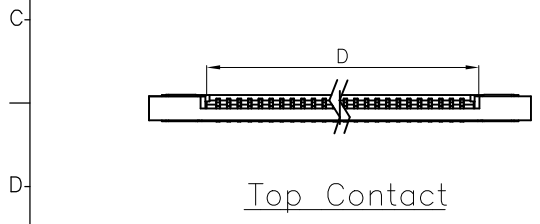
REV.	SPECIFICATION	ECN NO.	APPD.



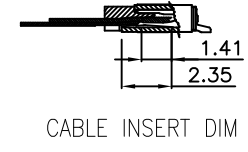
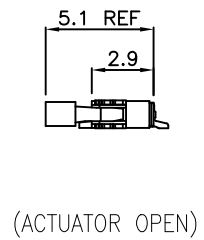
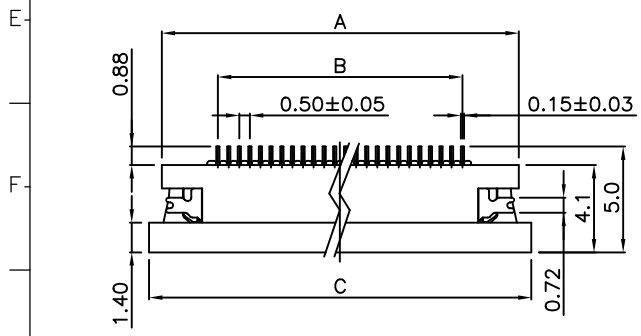
Material:
Housing: LCP, UL94V-0, Natural.
Actuator: LCP, UL94V-0, Black.
Contacts: Phosphor Bronze, 100u" Tin Plated over Nickel 50u" or Gold Flash over Nickel 50u".
Solder Pad: Brass, 80u" Matte Tin Plated over 40u" Nickel.

Electrical Characteristics:
Voltage Rating: DC 50V.
Current Rating: 0.3AMP.
Dielectric Withstanding Voltage: AC 500 V For 1 minute.
Insulation Resistance: 800MΩ min.
Contact Resistance: 30mΩ max.
Operating Temperature: -25°C~+85°C.

***RoHS Compliant**

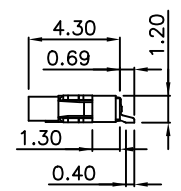
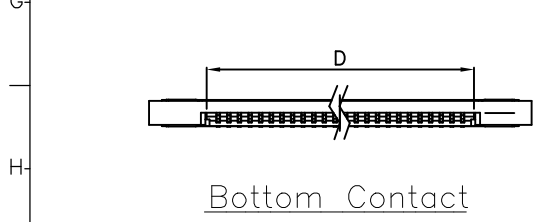


FPC/FFC Insert Direction
Recommended PCB Layout
Tolerance: ±0.05



Series: 2346-C
Positions: xx
T: Tin Plated
G00: Gold Flash
D: SMD Type


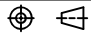
U: Tube Package
T: Tape & Reel Package
1: Top Contact
2: Bottom Contact



Tolerances	Dwg No.	2346D00003	Title:	OUPIIN OUPIIN ELECTRONIC(KUNSHAN) CO., LTD. P/N: 2346-CxxTDxT SHEET 1/2 Ver.No. A3
.x = ±0.50	Projection		2346-C Series	
.xx = ±0.25	Unit	mm	FFC/FPC Connector	
.xxx = ±0.15	Drawn By	Jerry 04/22'20	0.5mm ZIP Type	

REV.	SPECIFICATION	ECN NO.	APPD.

* Have Produce Pin Number				
Positions	A	B	C	D
*04	6.80	1.50	8.00	2.58
*06	7.80	2.50	9.00	3.58
*08	8.80	3.50	10.00	4.58
*10	9.80	4.50	11.00	5.58
*12	10.80	5.50	12.00	6.58
*14	11.80	6.50	13.00	7.58
*16	12.80	7.50	14.00	8.58
*18	13.80	8.50	15.00	9.58
*20	14.80	9.50	16.00	10.58
22	15.80	10.50	17.00	11.58
*24	16.80	11.50	18.00	12.58
*26	17.80	12.50	19.00	13.58
*28	18.80	13.50	20.00	14.58
*30	19.80	14.50	21.00	15.58
*32	20.80	15.50	22.00	16.58
34	21.80	16.50	23.00	17.58
*36	22.80	17.50	24.00	18.58
38	23.80	18.50	25.00	19.58
*40	24.80	19.50	26.00	20.58
42	25.80	20.50	27.00	21.58
44	26.80	21.50	28.00	22.58
46	27.80	22.50	29.00	23.58
48	28.80	23.50	30.00	24.58
*50	29.80	24.50	31.00	25.58
52	30.80	25.50	32.00	26.58
54	31.80	26.50	33.00	27.58
56	32.80	27.50	34.00	28.58
58	33.80	28.50	35.00	29.58
*60	34.80	29.50	36.00	30.58

Tolerances	Dwg No.	2346D00003	Title:		 OUPIIN ELECTRONIC(KUNSHAN) CO., LTD. P/N: 2346-CxxTDxT	
.x = ±0.50	Projection		2346-C Series			
.xx = ±0.25	Unit	mm	Scale	1:1		
.xxx = ±0.15	Drawn By	Jerry 04/22'20	Φ570	0.5mm ZIP Type		
			SHEET	2/2	Ver.No.	A3